

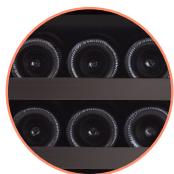


WINE CELL'R[™]

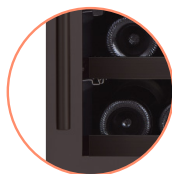
Black Diamond



SEAMLESS
DOOR



BLACK STAINLESS
STEEL FRONT



DESIGN
HANDLE

MODEL

WC46SBDZ6

TECHNICAL FEATURES

CAPACITY	46 bottles*
TEMPERATURE ZONE	2 zones
TEMPERATURE	Upper 5-12 degrees Lower 8-19 degrees
DIMENSIONS	H 34 ¼" X W 23 ½" X D 22 ½" H 870mm X W 595mm X D 570mm
BUILT-IN DIMENSIONS	H 34 ¾" X W 23 ¾" X D 23 ¾" H 880mm X W 605mm X D 590mm
WEIGHT	141 lbs / 64 kg

SPECIFIC FEATURES

PROFESSIONAL USE	Yes
BUILT-IN OR FREE STANDING	Yes
CHARCOAL FILTER	Yes
DOOR	Glass door (seamless) UV proof
REVERSIBLE DOOR	Yes
DOOR ALARM	Yes
HANDLE	Design Handle (16mm)
CONTROL	Electronic
LIGHTING	LED Stripes
SHELVES	5 + 1 half
SHELVES OPENING	80%
EXTENSIBLE BALL-BEARING SHELVES	Yes
CABINET COLOR	Black
VENTILATION GRILL	Black stainless steel
PART & LABOR WARRANTY	2 years
COMPRESSOR WARRANTY	3 years part only (Embraco)

* Capacities are approximate and calculated with bordeaux bottles type.



46

CAPACITY



IDEAL FOR
PROFESSIONAL



BUILT-IN



CHARCOAL
FILTER



ELECTRONIC
CONTROL



LED
LIGHTING



EXTENSIBLE
SHELVES



AIR CIRCULATION
FAN



BLACK

CABINET
COLOR

