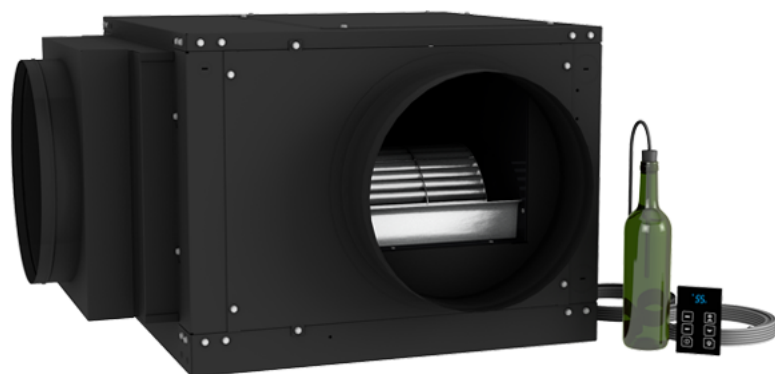




# **220V H.E. QUANTUM SERIES PRODUCT SHEETS**



### KEY FEATURES

- 3-Speed fan switch
- Stainless steel drip tray
- New sleek black metal kit
- Quiet and efficient operation
- UV-C Lighting Sytem (ADD-ON)
- Flare fittings for easy installation
- Advanced electronic control system
- Standard and 24V thermostat options available (ADD-ON)
- Interchangeable evaporator airflow panels
- 55°F temp. differential between the cellar & condensing unit air intake temp.

\*Approximated in an environment that is fully insulated and sealed with a proper vapor barrier. Each wine cellar is unique and has specific cooling requirements. Heat load calculations should always be performed prior to selecting a cooling unit.

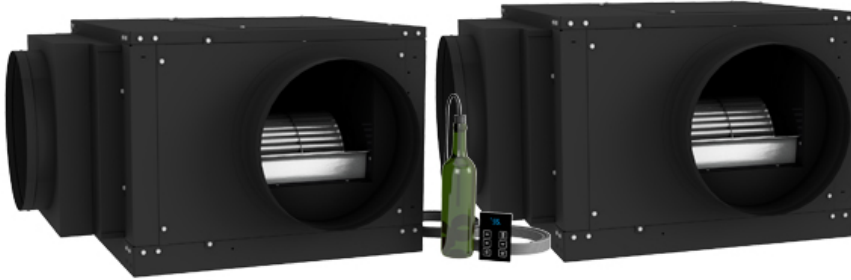
### SPECIFICATIONS

Model	Quantum 9000	Quantum 12000
Cellar Size	3,000 cu. ft.*	4,000 cu. ft.*
BTU/h (60°F condenser air intake temperature) <small>Sensible / Total</small>	10985 / 11316	2147 / 14576
BTU/h (75°F condenser air intake temperature) <small>Sensible / Total</small>	10711 / 11019	12187 / 14256
BTU/h (85°F condenser air intake temperature) <small>Sensible / Total</small>	10145 / 10786	11704 / 13844
CFM	590 (low-speed) 650 (medium-speed) 710 (high-speed)	
DBA	• EVAPORATOR - 52 • CONDENSER - 48	• EVAPORATOR - 52 • CONDENSER - 52
Dimensions	• EVAPORATOR - 29.5"L x 30.9"W x 19.8"H • CONDENSER - 31.18"L x 10.75"W x 21.18"H	• EVAPORATOR - 29.5"L x 30.9"W x 19.8"H • CONDENSER - 31.18"L x 10.75"W x 21.18"H
Refrigerant	R-134a	
HP	1 HP	1.5 HP
Voltage Rating	• EVAPORATOR - 120V <small>(15-amp dedicated circuit required)</small> • CONDENSER - 220V <small>(15-amp dedicated circuit required)</small>	• EVAPORATOR - 120V <small>(15-amp dedicated circuit required)</small> • CONDENSER - 220V <small>(15-amp dedicated circuit required)</small>
Weight (lbs)	• EVAPORATOR - 96 • CONDENSER - 64	• EVAPORATOR - 96 • CONDENSER - 84
Amps	• EVAPORATOR - 9.2 (Running Amps) • CONDENSER - LRA 20, RLA 4.25, FLA 4.89	• EVAPORATOR - 9.2 (Running Amps) • CONDENSER - LRA 23.6, RLA 5.76, FLA 6.6
Line Set	Liquid line 3/8" OD; Suction line 5/8" OD (less than 50 ft.), 3/4" (greater than 50 ft.)	
Drain Line	3/4" Female to base (CPPVC/PVC)	
Ducts	14" Supply • 14" Return (Up to 35ft per duct)	
Installation	Evaporator unit is installed in the cellar. Condensing unit can be installed up to 100 ft of line set from the evaporator unit.	
Thermostat	Advanced digital display (50ft. cable), liquid-temperature-measuring bottle probe (50ft. cable)	
Temp. Delta	Can maintain a 55°F cellar temperature with up to 120°F condenser air intake temperature	
Warranty	Two-year limited warranty with up to an additional (1) year grace period for installation. (parts and labor)	

### OPTIONAL ACCESSORIES

Exterior condenser housing, UV-C Lighting System, 24V thermostat conversion kit

**IMPORTANT NOTE:** Split System cooling units MUST be installed by a qualified licensed HVAC/R technician. Failure to do so will void your system's warranty.



### KEY FEATURES

- 3-Speed fan switch
- Stainless steel drip tray
- New sleek black metal kit
- Quiet and efficient operation
- UV-C Lighting Sytem (ADD-ON)
- Flare fittings for easy installation
- Advanced electronic control system
- Standard and 24V thermostat options available (ADD-ON)
- Interchangeable evaporator airflow panels
- 55°F temp. differential between the cellar & condensing unit air intake temp.

\*Approximated in an environment that is fully insulated and sealed with a proper vapor barrier. Each wine cellar is unique and has specific cooling requirements. Heat load calculations should always be performed prior to selecting a cooling unit.

### SPECIFICATIONS

Model	Quantum 18000	Quantum 24000
Cellar Size	5000 cu. ft.*	7500 cu. ft.*
BTU/h (60°F condenser air intake temperature) <small>Sensible / Total</small>	15513 / 18250	22893 / 26933
BTU/h (75°F condenser air intake temperature) <small>Sensible / Total</small>	14582 / 17155	21977 / 25856
BTU/h (85°F condenser air intake temperature) <small>Sensible / Total</small>	13806 / 16243	21519 / 25317
CFM	590 (low-speed) 650 (medium-speed) 710 (high-speed) (per evaporator)	
DBA	• EVAPORATOR - 58 • CONDENSER - 52	• EVAPORATOR - 58 • CONDENSER - 58
Dimensions	• EVAPORATOR - 29.5"L x 30.9"W x 19.8"H • CONDENSER - 31.18"L x 10.75"W x 21.18"H	• EVAPORATOR - 29.5"L x 30.9"W x 19.8"H • CONDENSER - 31.18"L x 10.75"W x 23.25"H
Refrigerant	R-134a	
HP	2 HP	3 HP
Voltage Rating	• EVAPORATOR - 120V (15-amp dedicated circuit required) • CONDENSER - 220V (15-amp dedicated circuit required)	• EVAPORATOR - 120V (15-amp dedicated circuit required) • CONDENSER - 220V (25-amp dedicated circuit required)
Weight (lbs)	• EVAPORATOR - 96 • CONDENSER - 116	• EVAPORATOR - 96 • CONDENSER - 171
Amps	• EVAPORATOR - 9.2 (Running Amps) • CONDENSER - LRA 37, RLA 6.5, FLA 7.56	• EVAPORATOR - 9.2 (Running Amps) • CONDENSER - LRA 46.6, RLA 11.39, FLA 13
Line Set	Liquid line 3/8" OD; Suction line 5/8" OD (less than 50 ft.), 3/4" (greater than 50 ft.)	
Drain Line	3/4" Female to base (CPPVC/PVC)	
Ducts	14" Supply • 14" Return (Up to 35ft per duct)	
Installation	Evaporator unit is installed in the cellar. Condensing unit can be installed up to 100 ft of line set from the evaporator unit.	
Thermostat	Advanced digital display (50ft. cable), liquid-temperature-measuring bottle probe (50ft. cable)	
Temp. Delta	Can maintain a 55°F cellar temperature with up to 120°F condenser air intake temperature	
Warranty	Two-year limited warranty with up to an additional (1) year grace period for installation. (parts and labor)	

### OPTIONAL ACCESSORIES

Exterior condenser housing, UV-C Lighting System, 24V thermostat conversion kit

**IMPORTANT NOTE:** Split System cooling units MUST be installed by a qualified licensed HVAC/R technician. Failure to do so will void your system's warranty.